



**YOUR HEALTH PERFECTED IN JAPAN**  
**EXECUTIVE HEALTH CHECKUP**

**Where World-Class Healthcare Meets Japanese Precision**

Luxury Medical Experience, Curated By Takumi Xperience Japan LLC

Presented by Takumi Xperience Japan LLC

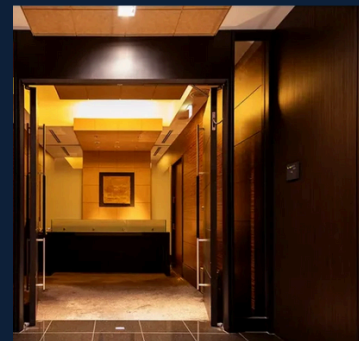
## — Tokyo Midtown Clinic

# EXECUTIVE MEDICAL SERVICES

At Tokyo Midtown Clinic, we provide premium, high-precision health screening services tailored specifically for international visitors to Japan.

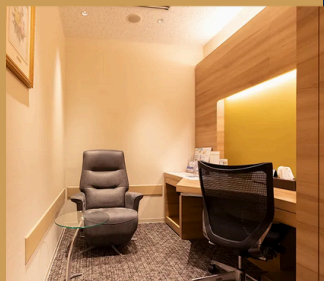
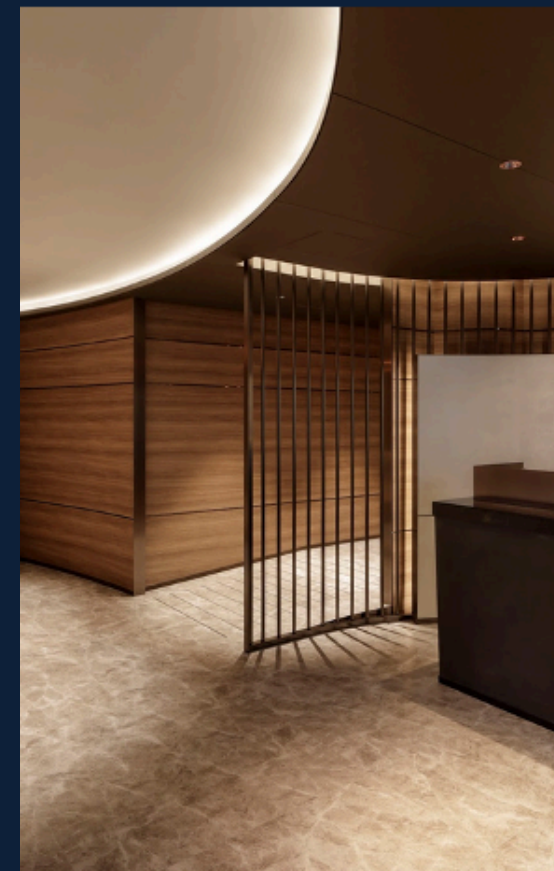
Conveniently located on the 6th floor of Tokyo Midtown, directly connected to Roppongi Station, the clinic offers exceptional accessibility. All examination facilities are centralized on a single floor, allowing guests to complete their health checkups efficiently and seamlessly.

We ensure smooth communication and attentive support, delivering a refined medical experience that meets the expectations of overseas guests seeking the highest standards of healthcare in Japan.



Distinguished VIP guests, including renowned business leaders and prominent figures, visit us from around the world.

Presented by [Takumi Xperience Japan LLC](#)



In addition to its luxurious space that defies expectations for a medical facility, it also ensures thorough consideration for privacy.

Presented by Takumi Xperience Japan LLC

— We provide Japan's premier HIMEDIC services.

WORLD'S FIRST INTRODUCTION  
OF PET FOR SCREENING

OVER 30 YEARS AND MORE THAN  
300,000 PET SCREENINGS PERFORMED



PET-CT

Combining CT and PET scans for whole-body cancer screening. Particularly effective for detecting lung cancer, thyroid cancer, and other cancers.



Canon Full-Body 320-Slice Upright CT

Accurately assesses the condition of the spine and joints, pelvic floor muscle laxity, and the state of muscles and visceral fat—areas difficult to visualize in supine positions.



3.0T MRI

It aids in the early detection of cerebrovascular disease, brain tumors, prostate cancer, and uterine cancer.

Presented by Takumi Xperience Japan LLC

We provide a premium medical experience through our original comprehensive health checkups and comfortable examination environment.

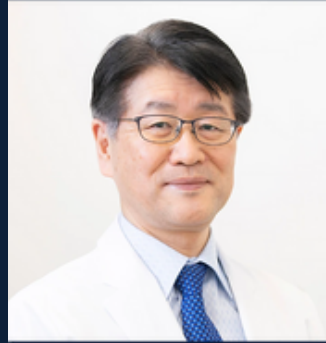
## LEADING PHYSICIAN IN JAPAN

WE PROVIDE ADVANCED HEALTH SCREENINGS UTILIZING CUTTING-EDGE MEDICAL EQUIPMENT SUCH AS PET/MRI, ALONG WITH COMPREHENSIVE HEALTH CHECKUPS THAT LEVERAGE OUR HOSPITALITY.



DR. KURIBAYASHI

MIDTOWN CLINIC,  
CHAIRMAN  
RADIOLOGY SPECIALIST



DR. TAGUCHI

FORMER IMPERIAL  
HOUSEHOLD PHYSICIAN  
CARDIOLOGIST



DR. MORIYAMA

FORMER DIRECTOR OF THE  
NATIONAL CANCER CENTER  
RADIOLOGY AND CANCER  
TREATMENT SPECIALIST



Organization Accredited  
by Joint Commission International

## GOLD PLAN – PROGRAM DETAILS

This is a comprehensive full-body screening course, including MRCP imaging.

<b>Physical Measurements</b>	Height/Weight/Body Mass Index (BMI)/Body Fat Percentage/Waist Circumference Blood Pressure/Visual Acuity/Fundus Examination/Intraocular Pressure/Hearing test
<b>Urinalysis</b>	Standard Urine Tests/Urinary NTX (Bone Metabolism Marker)
<b>Blood Tests</b>	Standard Blood Panel/Renal (Kidney) Function/Pancreatic Function/Metabolic Profile/Tumor Markers/Vascular Markers/Musculoskeletal Markers/Hormone Marker
<b>Vascular &amp; Arterial Function Tests</b>	Pulse Wave Velocity (PWV)/Ankle-Brachial Index (ABI)
<b>Gastrointestinal Examination</b>	Upper Gastrointestinal Endoscopy (with Sedation)
<b>Gynecological Examinations</b>	Cervical Cytology (Pap Smear)/Breast X-ray Examination (3D Mammography)
<b>Ultrasound Examinations</b>	Cardiac Ultrasound (Echocardiography)/Carotid Artery/Thyroid Abdominal Organs/ Transvaginal Ultrasound/Breast Ultrasound
<b>Diagnostic Imaging</b>	Brain MRI / MRA/Lower Abdominal MRI/MRCP (Pancreatic Imaging) CT Scan (Chest, Upper Abdomen, Visceral Fat Measurement)
<b>Healthy Longevity &amp; Preventive Screening</b>	Equol Production Test/Plasmalogen Test/Allergy Test (39 allergens)



### **DURATION : APPROXIMATELY 7-8 HOURS**

Program Overview : In addition to standard medical examinations, this course utilizes advanced diagnostic imaging technologies such as CT and MRI to conduct an in-depth, whole-body screening.

It is designed for individuals who wish to focus on the early detection of a wide range of conditions, including cancer and lifestyle-related diseases, through highly precise and thorough medical evaluation.

### **PLACE OF MEDICAL EXAMINATION**

Roppongi / Nihonbashi

### **EXAMINATION ROOM**

Private room

### **PRICE (GOLD PLAN)**

¥1,100,000

### **INTERPRETER ESCORT**

¥55,000

Presented by Takumi Xperience Japan LLC

## Agency Partnership

# EXCLUSIVELY DELIVERING JAPAN'S PREMIER HIMEDIC TO THE WORLD



### — Grand HIMEDIC Club (HIMEDIC)

Resort Trust Group operates Japan's premier membership-based comprehensive medical club.

Since initiating PET screening at Lake Yamanaka in 1994, we have leveraged our strength in a screening system (“Lake Yamanaka Method”) that combines high-precision imaging diagnostics (PET, CT, MRI) to provide early disease detection and preventive healthcare.

Noage International's membership-based medical club, HIMEDIC, provides high-precision preventive and longevity medicine to individuals overseas.



### — Japan DMC / MICE



Representative  
JUNICHI SOMEI

We are pleased to announce that Takumi Xperience Japan has entered into an official agency partnership with Noage International.

Through this partnership, we invite you to experience Japan's world-class, high-precision health screening services, designed to meet the expectations of international guests.

We are committed to supporting your investment in health through preventive medicine, offering seamless arrangements and trusted guidance to ensure a refined and medical experience in Japan.

Presented by Takumi Xperience Japan LLC

— We provide enhanced travel support to ensure a better overall experience.

## SPECIAL ARRANGEMENTS ARE ALSO AVAILABLE UPON REQUEST

For guests seeking high-precision health screening, we can flexibly arrange private transportation, refined sightseeing experiences, and exclusive dining options according to your preferences.

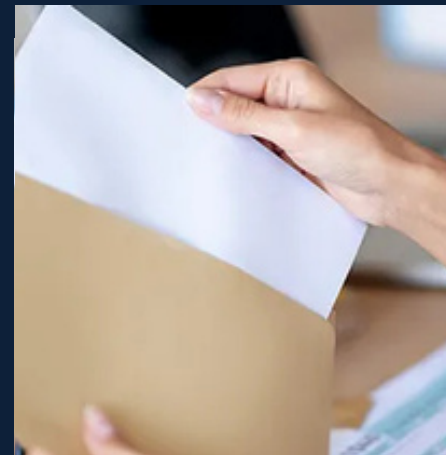
Please feel free to contact us to discuss your requirements—we would be delighted to assist in creating a seamless and elevated experience in Japan.



After the examination, a physician provides a clear and personalized consultation on the results.

---

<b>SILVER PLAN</b>	<b>¥550.000</b>
<b>GOLD PLAN</b>	<b>¥1.100.000</b>
<b>PLATINUM PLAN</b>	<b>¥1.650.000</b>



A comprehensive written report of all examination results will be provided approximately three weeks after the screening.

Should any concerns arise, a comprehensive follow-up care system ensures seamless and discreet support for complete peace of mind.

**Additional high-precision health screening programs are also available. Please feel free to contact us for further details.**

Presented by Takumi Xperience Japan LLC

We provide enhanced travel support to ensure a better overall experience.

# VIP-EXCLUSIVE ARRANGEMENTS AVAILABLE



INTERPRETER ESCORT



PRIVATE VEHICLE



EXCLUSIVE SIGHTSEEING

HEALTHY DINNER





Noage International

# EXPERIENCE A LUXURY HIGH-PRECISION HEALTH CHECKUP

## — Contact Information

> [connect@takumi-xp.com](mailto:connect@takumi-xp.com)

> 03-6658-8068

> HIRATA BUILDING 3F, 4-14-1  
KINSHI, SUMIDA-KU, TOKYO

> Takumi Xperience Japan LLC



Tokyo Midtown  
Clinic

dtown  
c

